



GMT MONTHLY MEMBERSHIP PROGRESS REPORT

Results as of: 3/31/2026

Multiple District 11

LOCATION: MICHIGAN

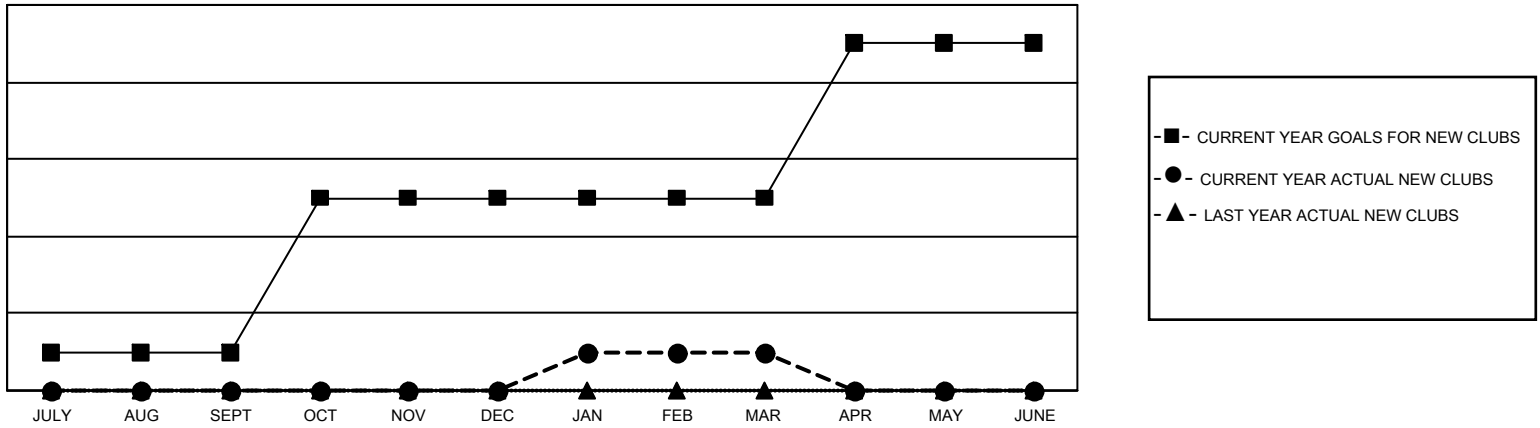
GMT: OPEN

GMT CA 1

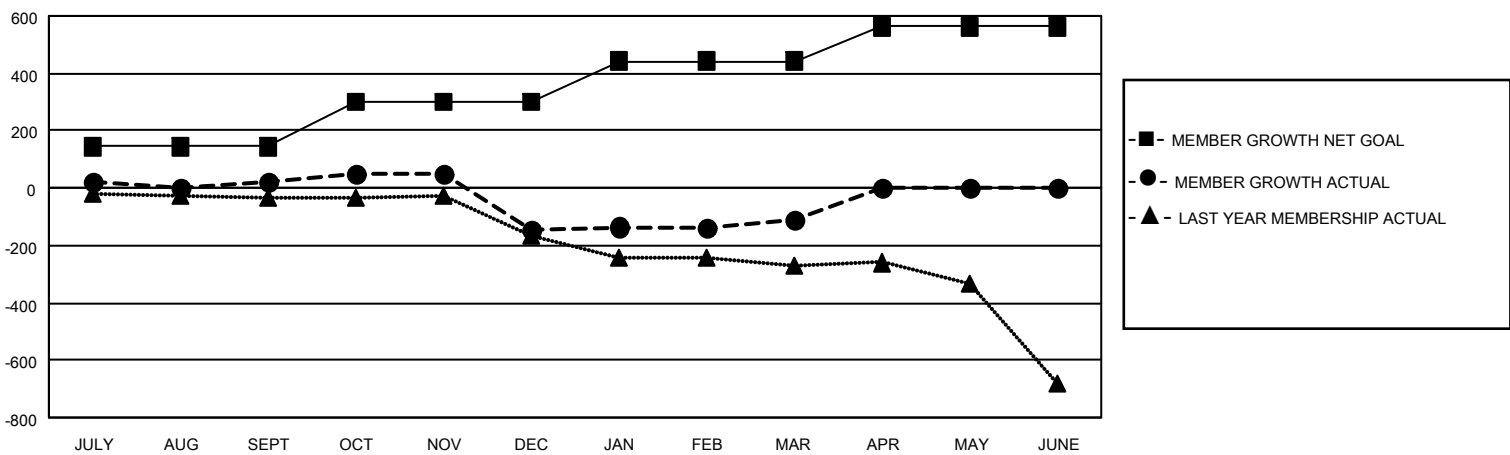
Clubs			
RESULTS FOR 2025-2026			
QUARTER	NEW CLUB GOAL	NEW CLUBS	DROPPED CLUBS
JULY/AUG/SEPT	1	0	3
OCT/NOV/DEC	4	0	7
JAN/FEB/MAR	0	1	0
APR/MAY/JUNE	4	0	0

Members			
RESULTS FOR 2025-2026			
QUARTER	MEMBER GROWTH NET GOAL	MEMBER GROWTH ACTUAL	DROPPED MEMBERS ACTUAL (including transfers)
JULY/AUG/SEPT	144	222	167
OCT/NOV/DEC	156	241	372
JAN/FEB/MAR	143	276	215
APR/MAY/JUNE	119	0	0

GOALS AND ACTUAL NEW CLUBS CUMULATIVE



GOALS AND ACTUAL MEMBERS CUMULATIVE



DROPPED CLUBS: 10	160 CLUBS OF 325 ADDED 1 OR MORE NEW MEMBERS	GENDER DISTRIBUTION MALE 5,166 (63.21%) FEMALE 3,007 (36.79%)
DROPPED MEMBERS	CLICK HERE FOR CUMULATIVE MEMBERSHIP DATA	TOTAL FAMILY UNIT MEMBERS 1,706 FAMILY MEMBERS PAYING HALF DUES 868
DECEASED 114 CLUB CANCELLED 42 OTHER 595 <hr/> TOTAL 751		